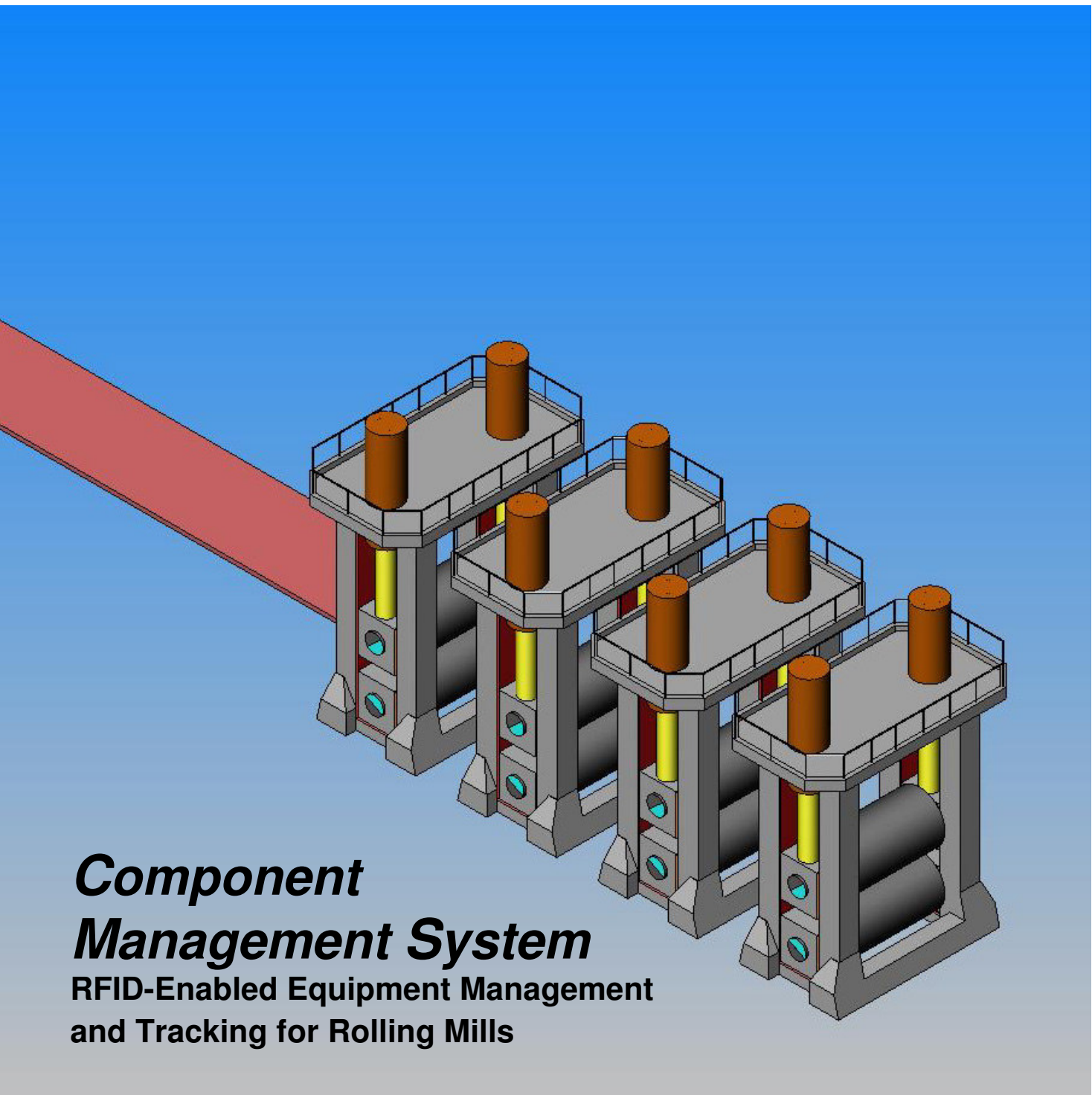
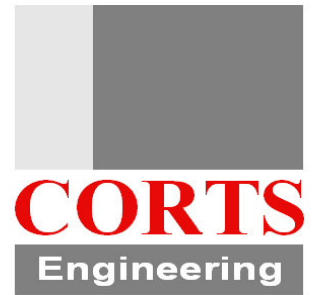


Engineering Services and Solutions for Rolling Mills



Component Management System

**RFID-Enabled Equipment Management
and Tracking for Rolling Mills**

The Objective



Every Rolling Mill, regardless of type, contains a large inventory of expensive rolling equipment. The discrete parts include housings, drive train, rolls, chocks, rollneck bearings, hydraulic units and precision flat bearings.

Not only are these components expensive to purchase, they are also expensive to maintain at the level necessary to produce quality, high value rolled product.

The recording and tracking of these parts using spreadsheets and associated strategies often produces a veritable **data and information overflow**.

While every Rolling Mill has a record of the **purchase** of these expensive parts, an accurate means of managing and tracking this equipment for maintenance and production purposes has not been available.

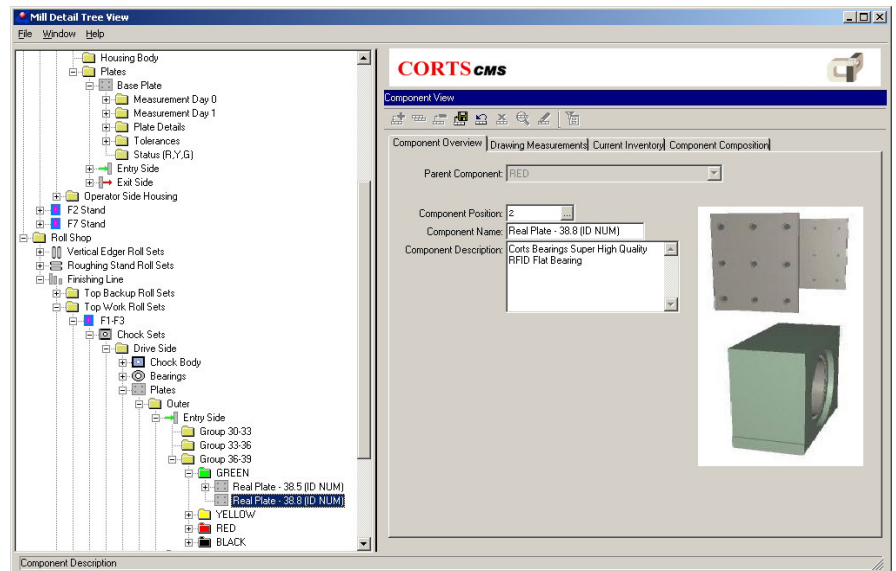
The Concept

The Corts Component Management System (**CMS**) makes the administration and optimised use of your valuable mill components possible for the first time. Checking mill equipment in and out is fast and easy using an RFID system to identify the parts with a handheld device during assembly or disassembly (roll changes included). Not only are the parts automatically identified, the clusters of components needed to roll are grouped together for tracking over specific rolling campaigns and under individual rolling conditions.

Furthermore, the results of Mill Audits, including reports and data from 3D Survey results are available instantly within the **CMS** application. This means that the original condition (to drawing specs) and the actual status (precisely measured and analyzed) may be viewed, and those data are integrated automatically and dynamically into the application. Data analysis from modules such as GAP-Control, Vibration Monitoring, and Coil Inspection are integrated into the heuristic environment of CMS, enabling informed decisions on all levels, from the shop level to management level (for budgeting, for example).

The Components

The system requires no installation in the traditional sense of the word. The main application and data servers are available via 128-bit or better secure internet connection at a level comparable to e-banking. It is only necessary to have an internet connection to make use of the rich administration and analysis tools. The portion of the application designed for the shop floor and roll shop runs on a handheld device made to industrial standards which can either cache the data collected or use the interactivity of a WLAN system. The data system itself learns over time and produces recommendations which are automatically and dynamically updated to reflect component condition and rolling performance.



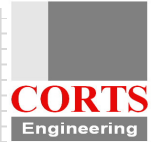
The Advantages

CMS serves as a clearing house and repository for all of the complex data regarding your important rolling assets. It also provides an integrated and interpretive framework for our wide range of services for measurement, testing, data interpretation and calibration. Integration into your existing ERP or PPS system is an option provided which can be quickly accomplished, due to our smart, standard interfaces.

Because **CMS** is hosted, very little additional IT equipment and overhead are necessary. Updates happen quickly and painlessly. Finally, **CMS** gives various levels of management powerful tools for a “techno-commercial” analysis. That is, it connects the deep technical heart of the mill and what exactly is happening there with the mill’s real reason for being: to produce high quality product at a high margin.



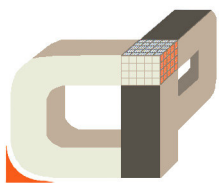
Notes



C&M Leussink Engineering
16-18 Doyle Ave, PO Box 371
Unanderra NSW 2530
P +61(0)2 4260 7777
F +61(0)2 4260 7788
www.leussink.com.au
info@leussink.com.au

CORTS Engineering
Dipl.-Ing. Jochen Corts
Ronsdorfer Str. 29-37
D-42855 Remscheid
P +49 (0)2191 / 98800-18
F +49 (0)2191 / 98800-56
www.corts.de
j.corts@corts.de

Partners



CP-Systems

Change Paradigm Systems AG

Dr. Daniel Hackmann
Gustav-Maurer-Str. 9
CH-8702 Zollikon

P. +41 (0)840 / 700 400
M. +41 (0)79 / 419 7319

www.cp-systems.ch
info@cp-systems.ch